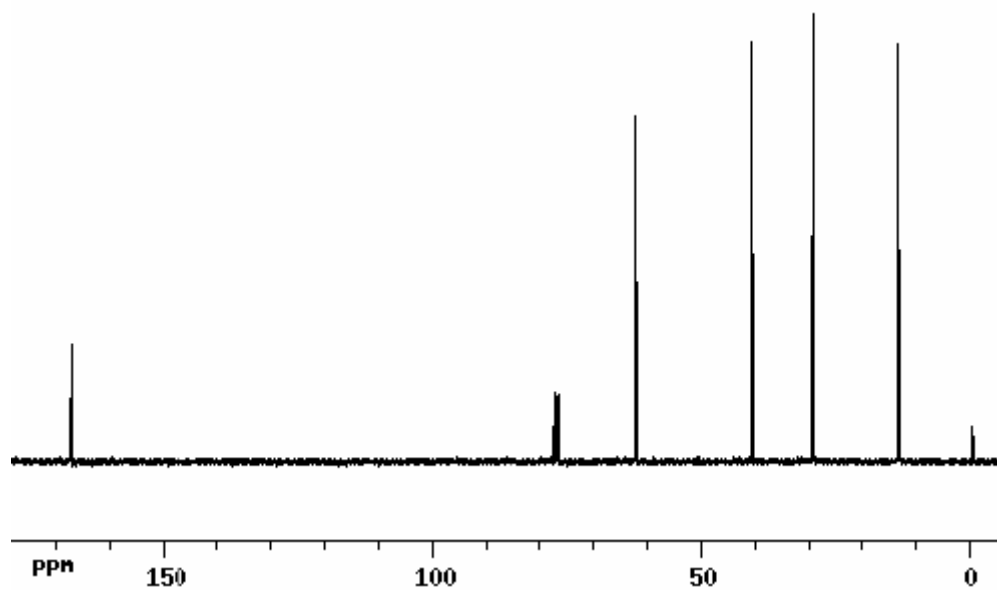
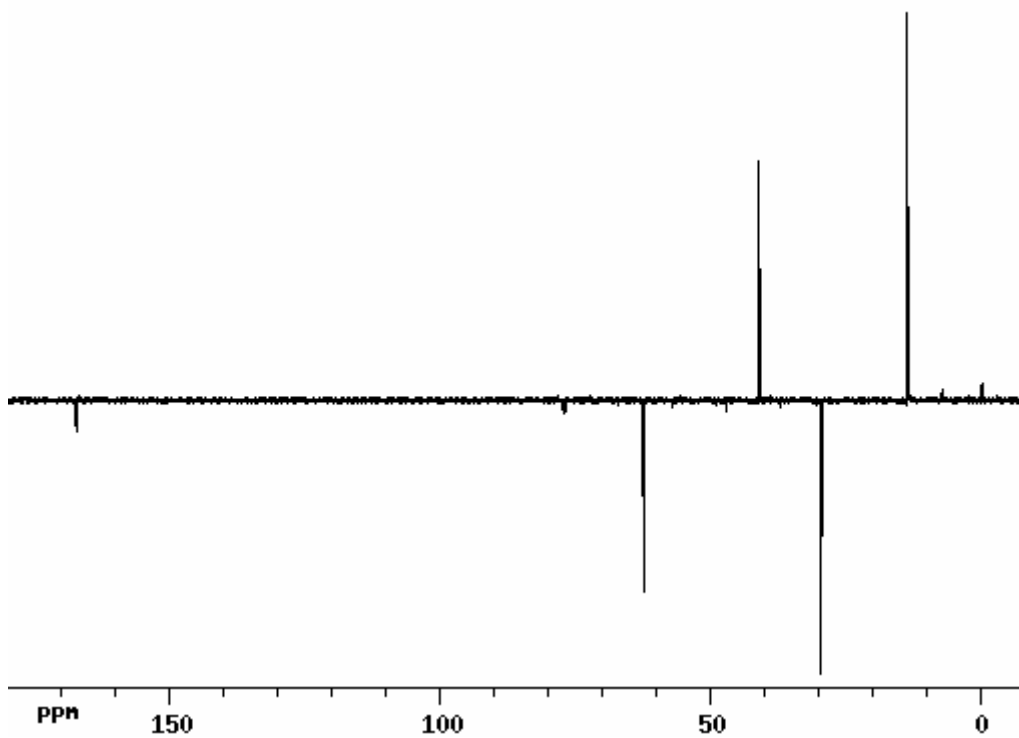


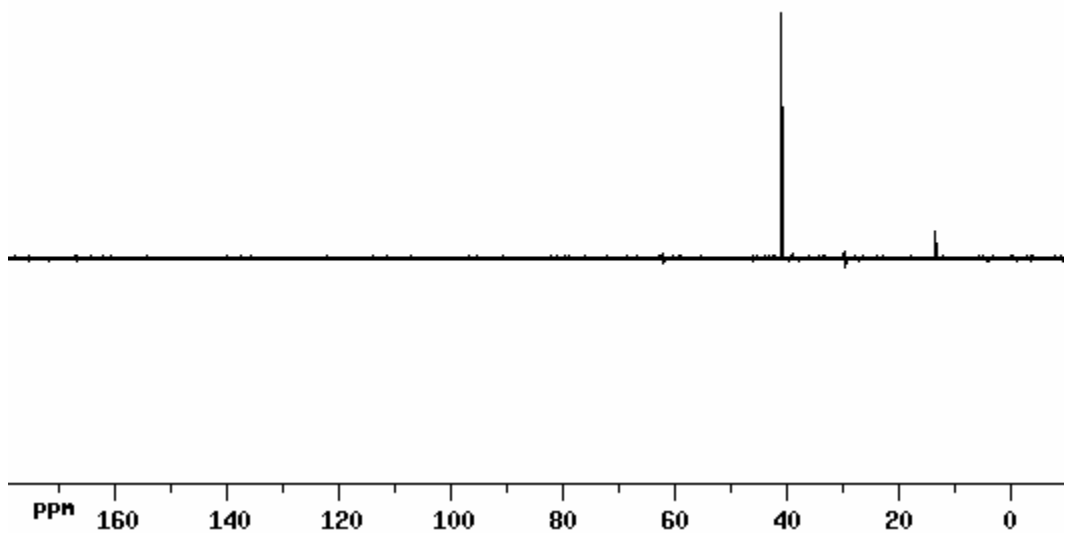
^{13}C – ethyl 2,3-dibromopropionate (5 carbons + CDCl_3 and TMS)



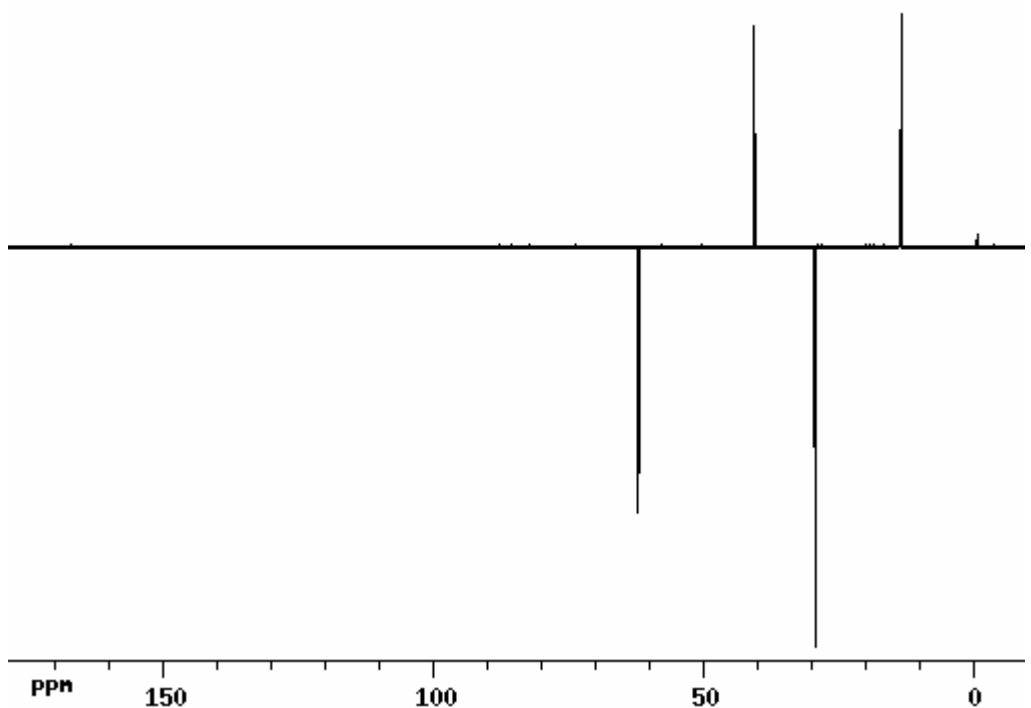
APT (attached proton test) – 1 CH_3 and 1 CH up, 1 C and 2 CH_2 down



DEPT 90 (Distortionless Enhancement by Polarization) – 1 CH up (all others invisible)



DEPT 135 – 1 CH₃ and 1 CH up, 2 CH₂ down (quat. carbons invisible)



There is a DEPT-45 –all carbons with an attached proton appear with a positive signal.